



Reference Sites Lithuania

Enterprise

Reference Site – Green Hotel Vilnius



Company Profile



Economy class hotel is established in 10-storey building with 126 rooms. Green Vilnius Hotel gives a unique opportunity it's visitors to choose their room by colour. Hotel has 14 single rooms, 9 of them are equipped for guests with disabilities. Hotel is able to accomodate 258 guests.

Requirement

1. Enhance Wi-Fi coverage
2. Reliability fast roaming for mobile devices
3. Easy installation and well-organized appearance
4. Centralized management and configuration

Solution

GS-5424PLG x1 24-Port Gigabit PoE+ with 4SFP Slots Web Smart Switch



CAP300 x18 Ceiling mount 300Mbps, gigabit PoE AP

CAP1200 x 2 2x2 AC Dual-Band Ceiling-Mount PoE AP

APC500 x 1 Wi-Fi controller for access points



Enterprise | Reference Site – Green Hotel Vilnius



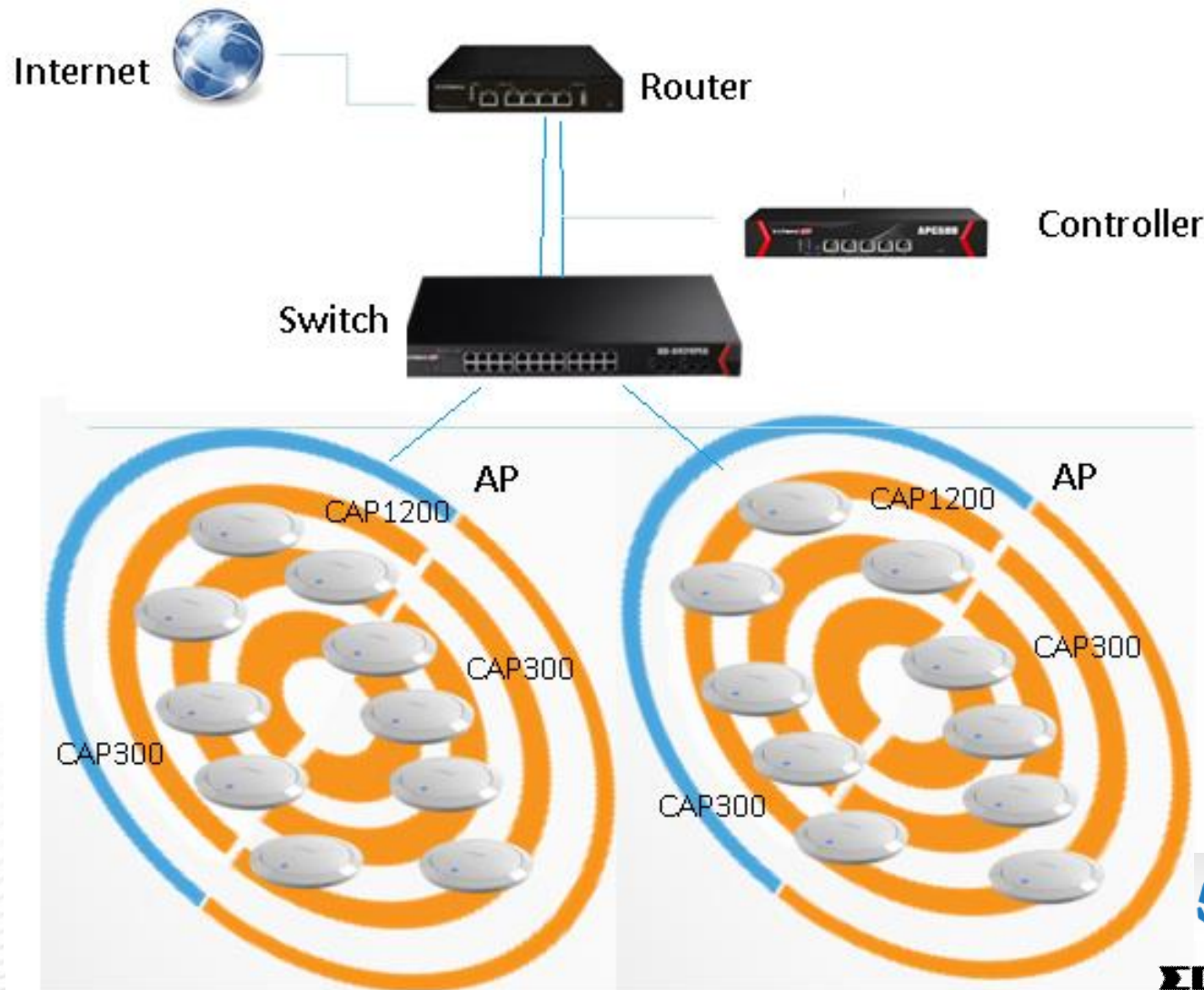
CAP300



Enterprise | Reference Site – Green Hotel Vilnius



Infrastructure Diagram



Решение корпоративного Wi-Fi

- ✓ Новый высокоскоростной Wi-Fi стандарт 802.11AC, 2 полосы
- ✓ Бесшовный роуминг, поддержка 802.11R, 802.11K
- ✓ Поддержка высокой плотности клиентов
- ✓ Высокая мощность и чувствительность
- ✓ Технология Band Steering
- ✓ СМС авторизация
- ✓ Портал авторизации
- ✓ Аппаратный контроллер, отказоустойчивость

$$\text{ROI} = \frac{\text{Функциональность} + \text{Надежность}}{\text{Цена}}$$

